



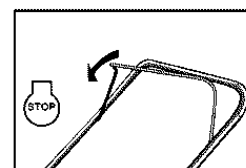
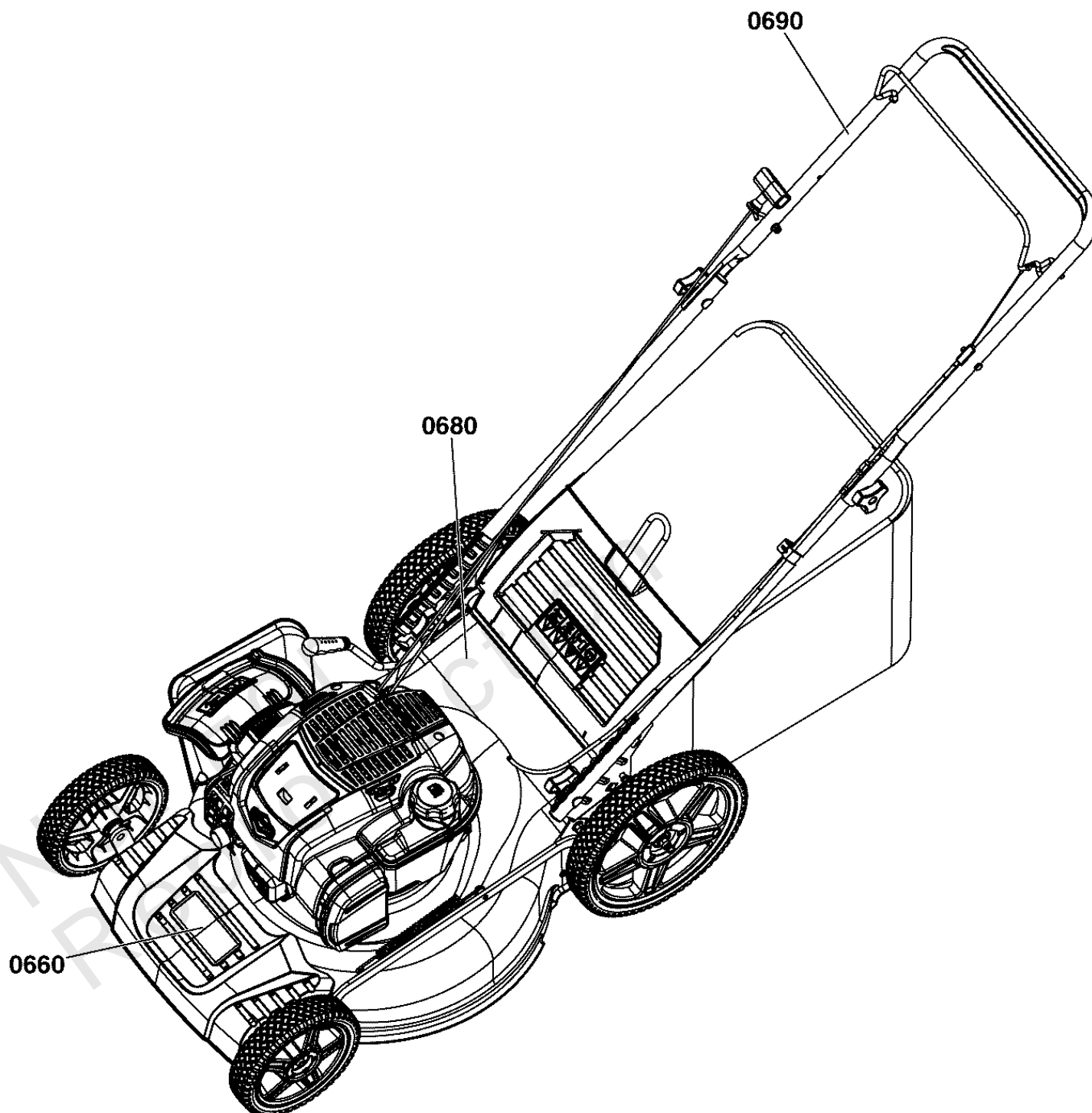
Parts Manual

Mfg. No: 2691763-00
675EXI, 21", 3IN1 Push



Model Components	Page
Decals Group.....	4
Deck & Engine Group.....	6
Drive Group.....	8
Handles & Controls Group.....	10
Torque Specification Chart.....	12

Not For
Reproduction



0660

0680

0690

Decals Group

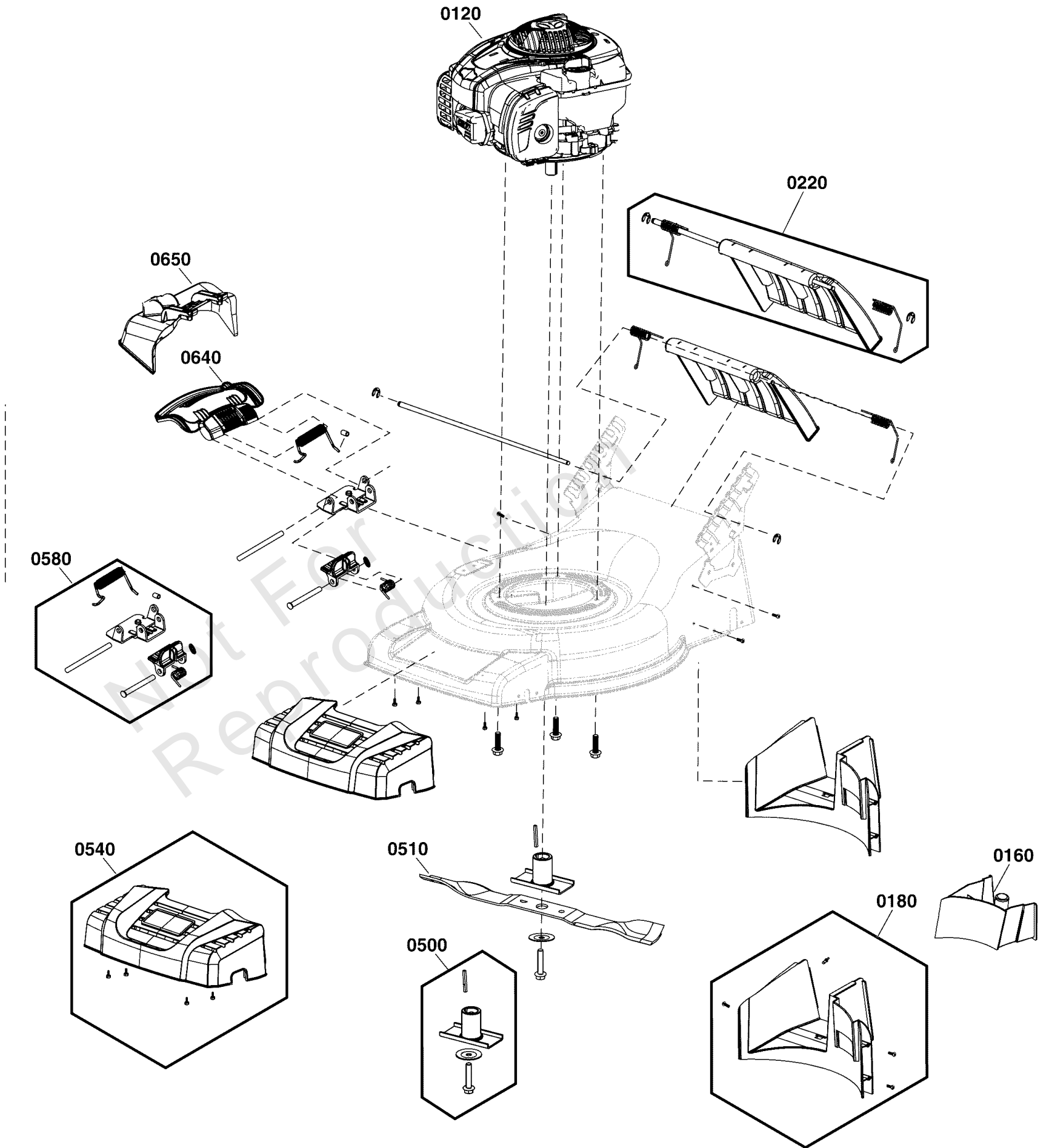
REF NO	PART NO	QTY	DESCRIPTION
0660	-----	1	DECAL, Murray
0680	-----	1	DECAL, Warning
0690	-----	1	DECAL, Handlebar

Not For Reproduction

Deck & Engine Group

Note: Unless noted otherwise, use the standard torque specifications

Mfg. No: 2691763-00



Deck & Engine Group

REF NO	PART NO	QTY	DESCRIPTION
0120	103M02-0011-H5	1	*ENGINE -(Refer to Note: *)
0160	84002859	1	PLUG, Mulch
0180	84002846	1	KIT, Baffle Assembly
0220	84002851	1	KIT, Deflector, Rear
0500	84005137	1	KIT, Hub
0510	84005059	1	BLADE, Mower
0540	84005057	1	KIT, Cover, Axle
0580	84005152	1	KIT, Hardware, Deflector
0640	707311	1	COVER, Mulching
0650	707312	1	CHUTE, Side Discharge

Not For
Reproduction

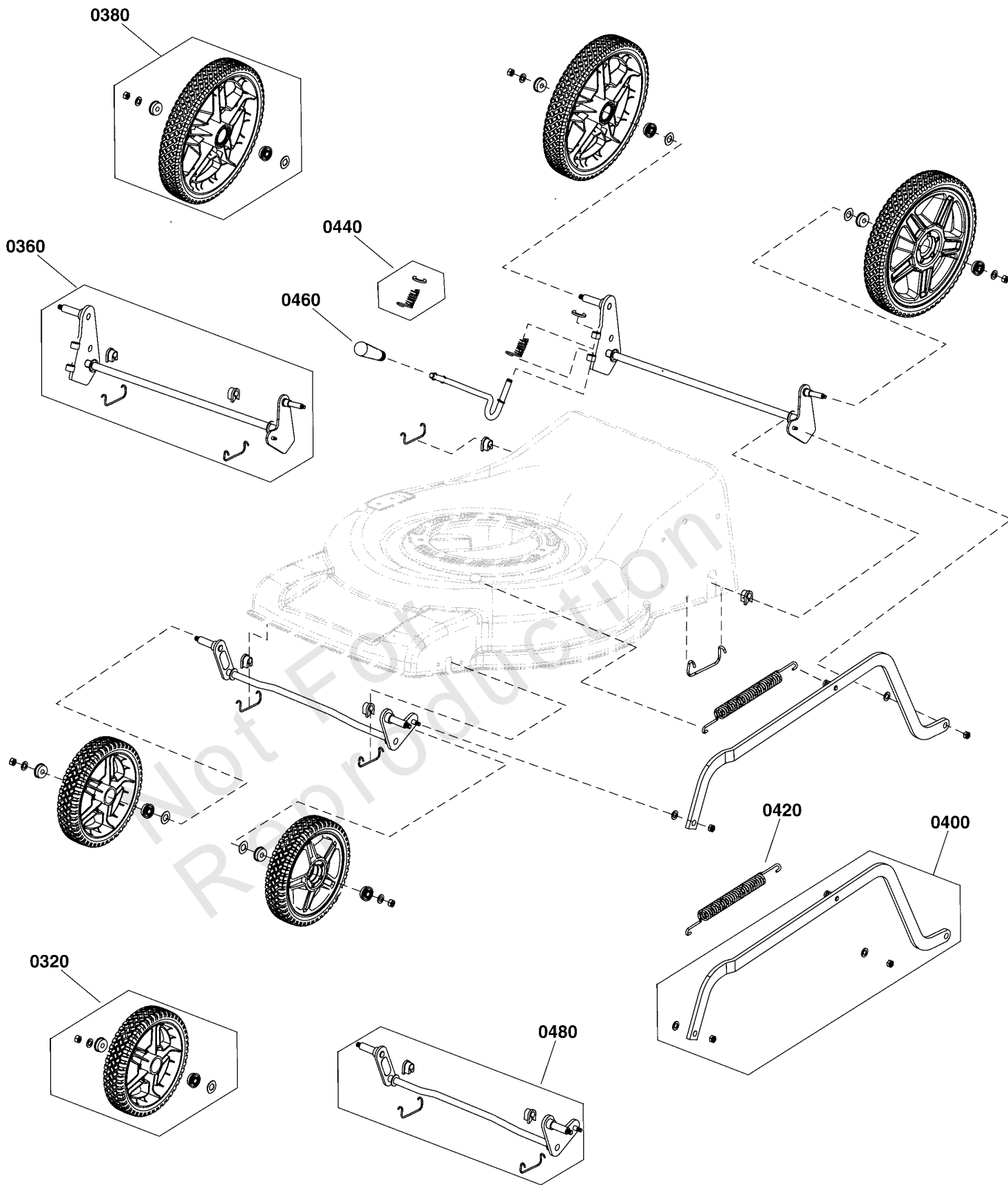
Footnotes:

Note:* Refer to your local Briggs & Stratton distributor for parts and service.

Drive Group

Note: Unless noted otherwise, use the standard torque specifications

Mfg. No: 2691763-00



Drive Group

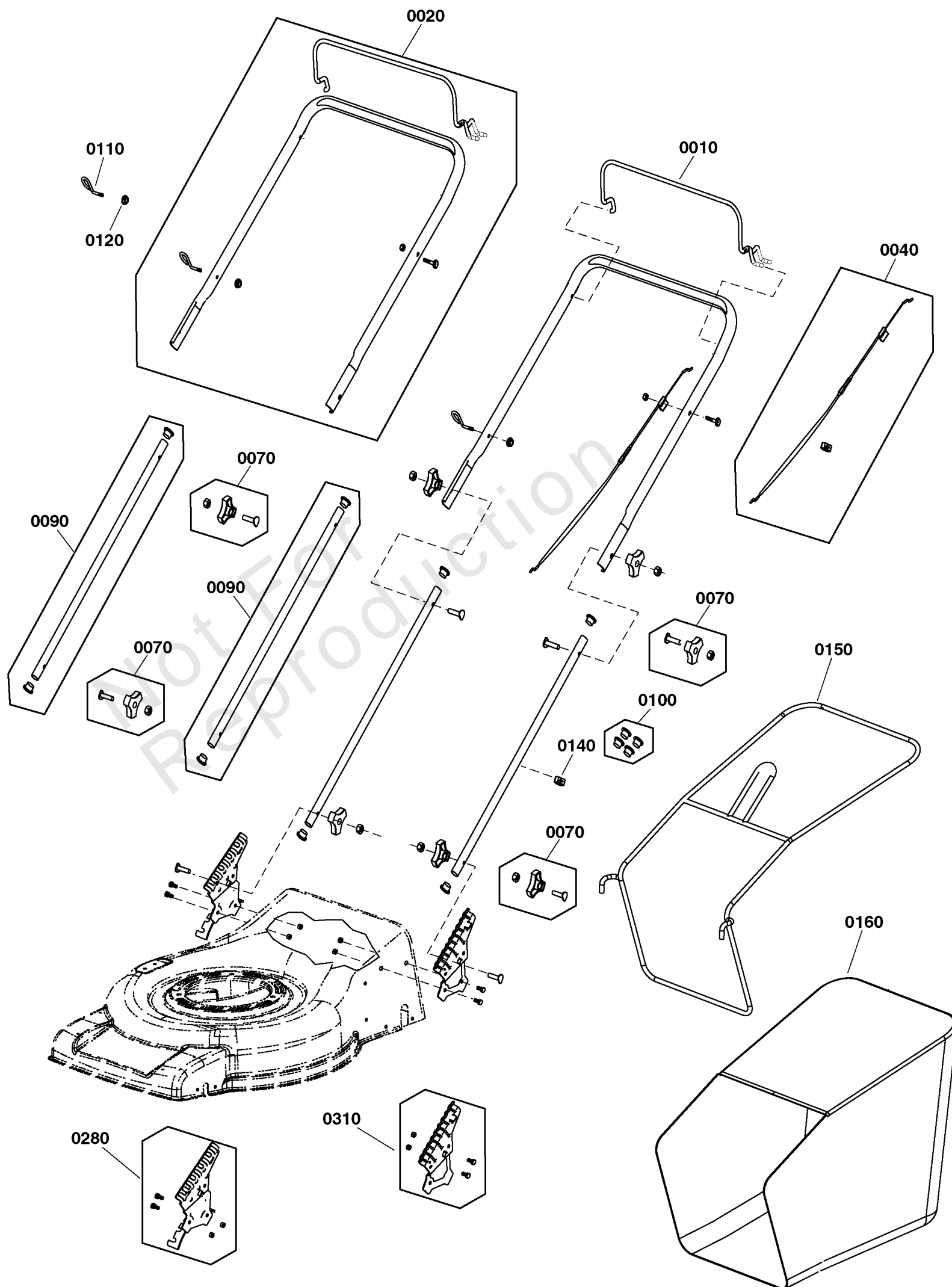
REF NO	PART NO	QTY	DESCRIPTION
0320	84005033	2	Kit, Wheel
0360	84005141	1	KIT, Rear Axle
0380	84005035	2	KIT, Wheel
0400	84002853	1	KIT, Height Adjust
0420	707580	1	SPRING, Connecting Rod
0440	84002864	1	KIT, Spring
0460	84005142	1	Handle
0480	84005145	1	KIT, Front Axle

Not For Reproduction

Handles & Controls Group

Note: Unless noted otherwise, use the standard torque specifications

Mfg. No: 2691763-00



Handles & Controls Group

REF NO	PART NO	QTY	DESCRIPTION
0010	84005155	1	BAIL ASSEMBLY
0020	84005153	1	KIT, Upper Handle
0040	84005134	1	KIT, Cable, Engine Stop
0070	84005058	4	KIT, Knob
0090	84005131	1	KIT, Handle, Lower
0100	84005132	1	KIT, Plug
0110	707218	1	GUIDE, Rope
0120	707196	1	NUT, Self Lock, M6
0140	84002857	1	GUIDE, Cable
0150	84002858	1	FRAME, Catcher, Grass
0160	84002876	1	CATCHER, Grass
0280	84005136	1	KIT, Bracket, Right
0310	84005135	1	KIT, Bracket, Left

Not For Reproduction

Hardware Identification & Torque Specifications

Torque Specification Chart								
FOR STANDARD METRIC MACHINE HARDWARE (Tolerance ± 20%)								
Property Class	5.6		8.8		10.9		12.9	
	Class 5.6		Class 8.8		Class 10.9		Class 12.9	
Size Of Hardware	in/lbs	Nm.	in/lbs	Nm.	in/lbs	Nm.	in/lbs	Nm.
	ft/lbs		ft/lbs		ft/lbs		ft/lbs	
M3	5.88	.56	13.44	1.28	19.2	1.80	22.92	2.15
M4	13.44	1.28	30.72	2.90	43.44	4.10	52.56	4.95
M5	26.4	2.50	60.96	5.75	5.97	8.10	7.15	9.7
M6	44.64	4.3	7.3	9.9	10.3	14	12.1	16.5
M7	5.2	7.1	12.1	16.5	16.9	23	19.9	27
M8	7.7	10.5	17.7	24	25	34	29	40
M10	15	21	35	48	50	67	59	81
M12	26	36	61	83	86.2	117	103	140
M14	42	58	101	132	136	185	162	220
M16	64	88	147	200	210	285	250	340
M18	89	121	202	275	287	390	346	470
M20	126	171	290	390	405	550	486	660
M22	169	230	390	530	559	745	656	890
M24	217	295	497	375	708	960	840	1140
M27	320	435	733	995	1032	1400	1239	1680
M30	435	590	995	1350	1401	1900	1681	2280
M33	590	800	1349	1830	1902	2580	2278	3090
M36	759	1030	1740	2360	2441	3310	2935	3980
M39	988	1340	2249	3050	3163	4290	3798	5150

Torque Specification Chart						
FOR STANDARD MACHINE HARDWARE (Tolerance ± 20%)						
Hardware Grade	No Marks		SAE Grade 5		SAE Grade 8	
	SAE Grade 2		SAE Grade 5		SAE Grade 8	
Size Of Hardware	in/lbs	Nm.	in/lbs	Nm.	in/lbs	Nm.
	ft/lbs		ft/lbs		ft/lbs	
8-32	19	2.1	30	3.4	41	4.6
8-36	20	2.3	31	3.5	43	4.9
10-24	27	3.1	43	4.9	60	6.8
10-32	31	3.5	49	5.5	68	7.7
1/4-20	66	7.6	8	10.9	12	16.3
1/4-28	76	8.6	10	13.6	14	19.0
5/16-18	11	15.0	17	23.1	25	34.0
5/16-24	12	16.3	19	25.8	29	34.0
3/8-16	20	27.2	30	40.8	45	61.2
3/8-24	23	31.3	35	47.6	50	68.0
7/16-14	30	40.8	50	68.0	70	95.2
7/16-20	35	47.6	55	74.8	80	108.8
1/2-13	50	68.0	75	102.0	110	149.6
1/2-20	55	74.8	90	122.4	120	163.2
9/16-12	65	88.4	110	149.6	150	204.0
9/16-18	75	102.0	120	163.2	170	231.2
5/8-11	90	122.4	150	204.0	220	299.2
5/8-18	100	136	180	244.8	240	326.4
3/4-10	160	217.6	260	353.6	386	525.0
3/4-16	180	244.8	300	408.0	420	571.2
7/8-9	140	190.4	400	544.0	600	816.0
7/8-14	155	210.8	440	598.4	660	897.6
1-8	220	299.2	580	788.8	900	1,244.0
1-12	240	326.4	640	870.4	1,000	1,360.0

The guides and ruler furnished below are designed to help you select the appropriate hardware.



Nut, M8

Thread Diameter (mm)

Inside Diameter (in) Threads per inch

Nut, 1/2-16



Screw, M8- 1.25 x 25

Thread Diameter (mm) Distance between threads (mm) Body Length (mm)

Body Diameter Threads per inch Body Length (in)

Screw, 1/2- 16 x 2



Standard Hardware Sizing

When a washer or nut is identified as 1/2" (M8), this is the *Nominal size*, meaning the *inside diameter* is 1/2 inch (8mm metric thread diameter); if a second number is present it represents the *threads per inch* (distance between threads).

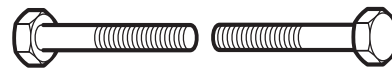
When bolt or capscrew is identified as 1/2 - 16 x 2" (M8 - 1.25 x 50), this means the *Nominal size*, or body diameter is 1/2 inch (8mm metric thread diameter), the second number, 16, represents the *threads per inch*, (*distance between threads*). The final number is the body length of the bolt or screw, 2 inches (50mm).

NOTES

- These torque values are to be used for all hardware excluding: locknuts, self-tapping screws, thread forming screws, sheet metal screws and socket head setscrews.
- Recommended seating torque values for locknuts:
 - for prevailing torque locknuts - use 65% of grade 5 torques.
 - for flange whizlock nuts and screws - use 135% of grade 5 torques.
- Unless otherwise noted on assembly drawings, all torque values must meet this specification.

Common Hardware Types

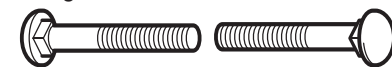
Hex Head Capscrew



Washer



Carriage Bolt



Hex Nut

Wrench & Fastener Size Guide

1/4" Bolt or Nut Wrench—7/16"	5/16" Bolt or Nut Wrench—1/2"	3/8" Bolt or Nut Wrench—9/16"	7/16" Bolt or Nut Wrench (Bolt)—5/8" Wrench (Nut)—11/16"	1/2" Bolt or Nut Wrench—3/4"
M6 Bolt or Nut Wrench—10mm	M8 Bolt or Nut Wrench—13mm	M10 Bolt or Nut Wrench—17mm	M12 Bolt or Nut Wrench—19mm	M14 Bolt or Nut Wrench—22mm

MURRAY®